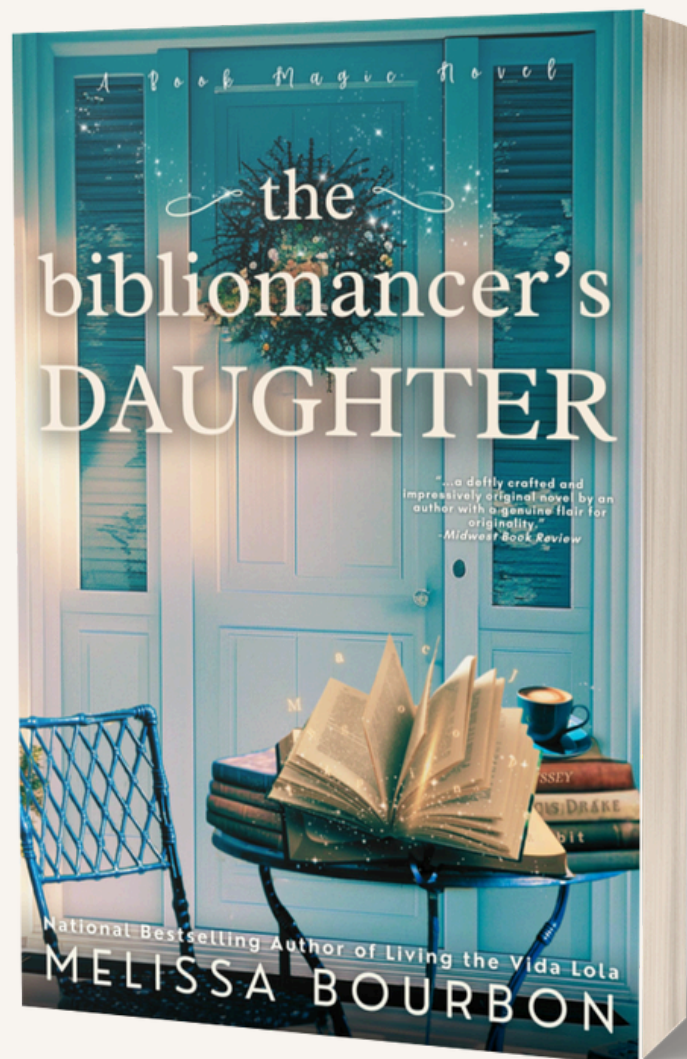
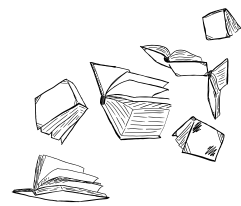


*THE*  
BIBLIOMANCER'S  
DAUGHTER  
Book Club Guide





## Book Club Guide

# THE BIBLIOMANCER'S DAUGHTER

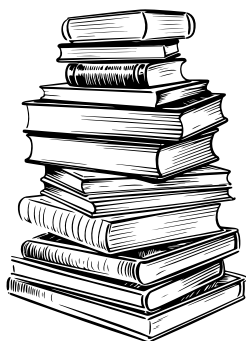
By Melissa Bourbon

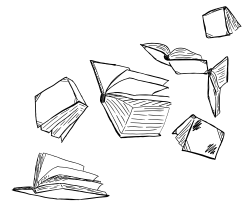
Welcome to Devil's Cove, where the sea keeps its secrets, books whisper truths, and the Lane family bears the weight of an ancient Irish curse. I hope you'll use this book club guide to spark conversation, uncover hidden meanings, and celebrate the magic at the heart of Pippin Lane Hawthorne's story in *The Bibliomancer's Daughter*.



### WARM-UP

- In one sentence, how would you describe this story to a friend who hasn't read it?
- What drew you to a novel centered on bibliomancy (divination through books)?
- Before reading, what did you imagine "book magic" would look/feel like in a contemporary setting?





## ICEBREAKER MAGIC

- What first drew you to this story—the cover, the blurb, or the promise of book magic?
- If you had to describe *The Bibliomancer's Daughter* in three words, what would they be?
- If this novel had a playlist, which songs or mood would it capture?
- Imagine you inherited the gift of bibliomancy. What book would you most want to divine from, and why?
- Are you more drawn to the sea's mystery like Gray, or to books' hidden wisdom like Pippin?



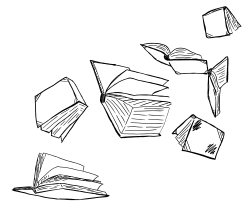
## BIG-PICTURE THEMES

- **Legacy & Inheritance:** What do families pass down—stories, gifts, burdens, responsibilities?
- **Fate vs. Choice:** When prophecy or “signs” appear, what agency do characters retain?
- **Truth, Secrets, and Memory:** How do hidden histories shape identity?
- **The Healing Power of Story:** Books as mirrors, maps, and medicine.
- **Friends, Family, Community:** How does community, whether by birth or choice, impact how we live?

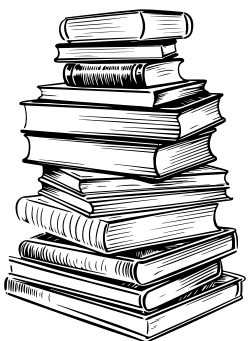


# Discussion Questions:

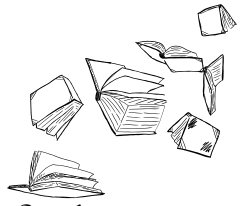
## THE LEGACY OF DEVIL'S COVE



- **First Impressions:** How did the prologue and opening chapters set the tone? Did you feel the heaviness of the Lane family curse immediately?
- **Pippin's Journey:** As the protagonist, how did Pippin's emotional arc guide the story? What did you think of her hesitation to embrace her bibliomancy gift at first?
- **Gray's Role:** How does Gray Hawthorne function as both a skeptic and eventual believer? In what ways does his path mirror or counter Pippin's?
- **The Lane Family Curse:** The curse dooms Lane women to die in childbirth and men to be claimed by the sea. Did you interpret this as purely supernatural, or as a metaphor for generational trauma?
- **The Book as Oracle:** Which bibliomancy scene most struck you—the words leaping from the page, or the way they reshaped Pippin's understanding of her past?
- **Devil's Cove as a Character:** How did the sea, the old house, and the town shape the novel's atmosphere? Did the setting feel protective, hostile, or both?
- **Secrets Revealed:** Which hidden truth about the Lane family shocked you the most? How did it change your view of Cassie, Pippin, or Gray?
- **The Boat Discovery:** Pippin and Gray find secrets tied to their father's fishing boat. How does this scene reframe his disappearance?
- **The Weight of Silence:** How does silence act as its own form of inheritance within the novel?



## THEMES OF INHERITANCE AND IDENTITY



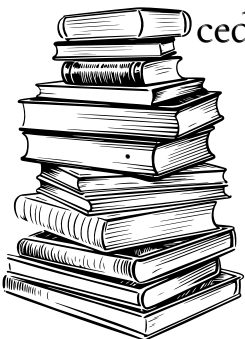
- How does the story explore what we inherit—not just magical gifts, but grief, silence, and unfinished stories?
- In what ways does Pippin carry the Lane legacy differently than Gray?
- How does reclaiming one’s family history empower—or endanger—the present?

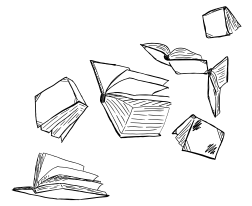
## THE MAGIC SYSTEM

- Bibliomancy is rare and particular—reading hidden truths through books. Did the rules of this magic feel grounded and believable?
- Which magical element stood out to you most: the books, the sea, or the haunting legacy?
- If you could have one aspect of Pippin’s gift, what would it be?

## FOR THE MAGIC-SEEKERS

- **Cast the Movie:** Who would you cast as Pippin, Gray, Cassie, and the townsfolk of Devil’s Cove?
- **Design a Divination:** If you could create your own form of bibliomancy, what book (or genre) would you divine from? What kinds of truths would it reveal?
- **Create a Signature Treat:** Something seaside or bookish—sea-salt caramels, dark chocolate “pages,” or a drink called *The Cursebreaker*. What flavor notes would you include?
- **Bibliomancer’s Candle:** Design a candle based on Pippin’s gift. Would it smell of salt air and ink, pressed flowers in old books, or storm-soaked cedar?





## FINAL REFLECTIONS

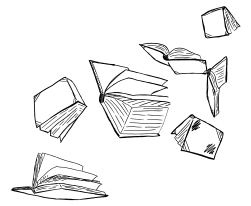
- What does *The Bibliomancer's Daughter* say about how we carry our family's past?
- Were there any passages that felt like they were written just for you?
- What emotions did the story leave you with—hopeful, haunted, heartened?
- Are you curious about the curse that still looms over Pippin and Gray? What mysteries do you still want unraveled?
- What questions linger with you?

## ENCHANTING MOOD IDEAS

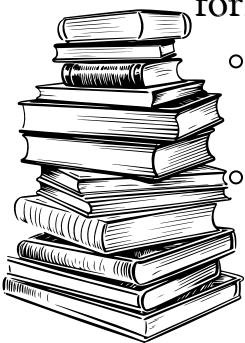
- **Book Club Mood:** Play soft instrumental or Celtic-inspired music, serve sea-salt or bookish snacks, light candles, and let the ocean's mystery seep into the discussion.
- **Journal Prompt:** Write your own “ancestral letter”—from one Lane ancestor to Pippin, or from Pippin to her future child.
- **Explore More:** Look into real Irish folklore, sea myths, or practices of bibliomancy to deepen the experience.

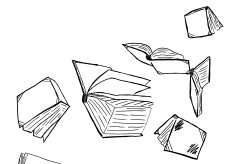


## EXPANDED DISCUSSION QUESTIONS

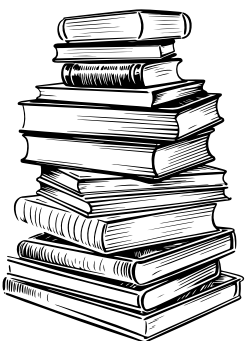


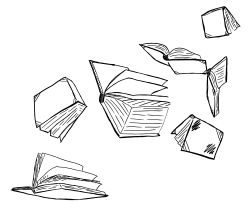
- The Lane family curse is described as affecting generations: “generation after generation, the women perish in childbirth, while the men are claimed by the unforgiving sea.”
  - Which characters in the novel most clearly embody or resist that curse?
  - How do Pippin’s and Gray’s (Grey’s) lives reflect the dual dangers of sea and childbirth?
- The story begins with Pippin and Gray being drawn back to Devil’s Cove after decades away, where they find their late father’s old fishing boat hiding a secret.
  - What is the significance of that boat as both heirloom and hiding place?
  - How does this discovery act as a portal into the family’s hidden past?
- As a bibliomancer, Pippin can divinate through books — reading the hidden story etched “into the pages” as well as on them.
  - Can you point to one moment in the book when Pippin’s reading between the lines (the hidden text) changes her trajectory more than her literal reading?
  - Which passage or book in the novel becomes a turning point in her understanding of the curse?
- Cassie Lane (their mother) apparently banned books in their childhood (especially after Leo Hawthorne vanished at sea) — Pippin and Gray discover a secret room behind locked doors where their father kept the forbidden volumes.
  - Why do you think Cassie banned books, and how did that decision reverberate in Pippin’s psyche?
  - What emotional stakes are tied into the secret room’s revelation?



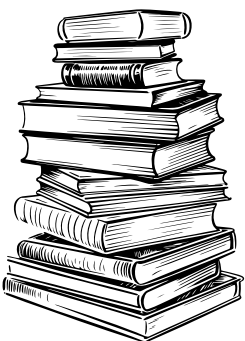


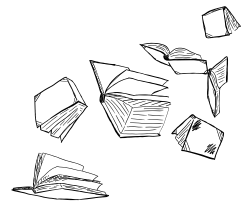
- The vessel and the sea are recurring symbols (the sea “claiming” ~~men~~, the boat hiding secrets).
  - What scenes best blend the menace and allure of the sea?
  - How do those water/sea scenes contrast with the solidity (or fragility) of books and pages?
- Gray and Pippin are twins.
  - In what ways does Gray’s role mirror or diverge from Pippin’s?
  - What scenes show Gray stepping into danger (or confronting the curse) more directly than Pippin does?
- When Pippin begins to unravel the history of the Lane line, she learns of betrayals, disappearances, and secrets too dangerous to speak.
  - Which secret you encountered felt most pivotal to the narrative’s unraveling?
  - Did any revelation reframe a character you had judged earlier?
- The climax hinges on how much Pippin embraces her gift, confronts familial guilt, and confronts forces trying to perpetuate the curse.
  - Which moment felt like the true point of no return for Pippin?
  - Did the ending satisfy the promise of breaking or redeeming the curse? Why or why not?
- There’s tension between destiny (the curse) and choice (Pippin’s decisions).
  - Are there moments where Pippin makes a choice in spite of a foretold sign?
  - How do those moments redefine your sense of her agency?





- In the narrative, Pippin’s gift is both blessing and burden.
  - What scene made you most empathize with the burden side (the cost, weariness, danger)?
  - What scene made you feel the gift—her power, clarity, connection to lineage—most strongly?
- The island of Devil’s Cove itself is almost a character (windswept, remote, tied to sea lore).
  - Which description or scene made Devil’s Cove come alive for you?
  - How does the isolation of the island intensify the family’s secrets and the magic?
- After the reveal, Pippin and Gray must reckon with what to do with knowledge.
  - Which character’s reaction to truth surprised you most (denial, acceptance, resistance)?
  - If you were in Pippin’s place, would you have used your gift differently at the end?
- What did you think about the quotes at the beginning of each chapter?
  - Did they aid your understanding or enhance the experience?





- **Explore More:** The story continues with *Long Forgotten Stories*, *The Open Door Bookshop*, and *Shadows on the Page*, and Cassie's story is told in *Between the Lines*. Are you planning to continue the series to find out what happens to Pippin, Gray, and the ancient Irish curse?



*Thank you for visiting Devil's Cove and walking beside Pippin on her journey. May the echoes of the sea and the whisper of books stay with you long after the final page.*

*Until next time...*

*With wonder and magic,*

*Melissa*

